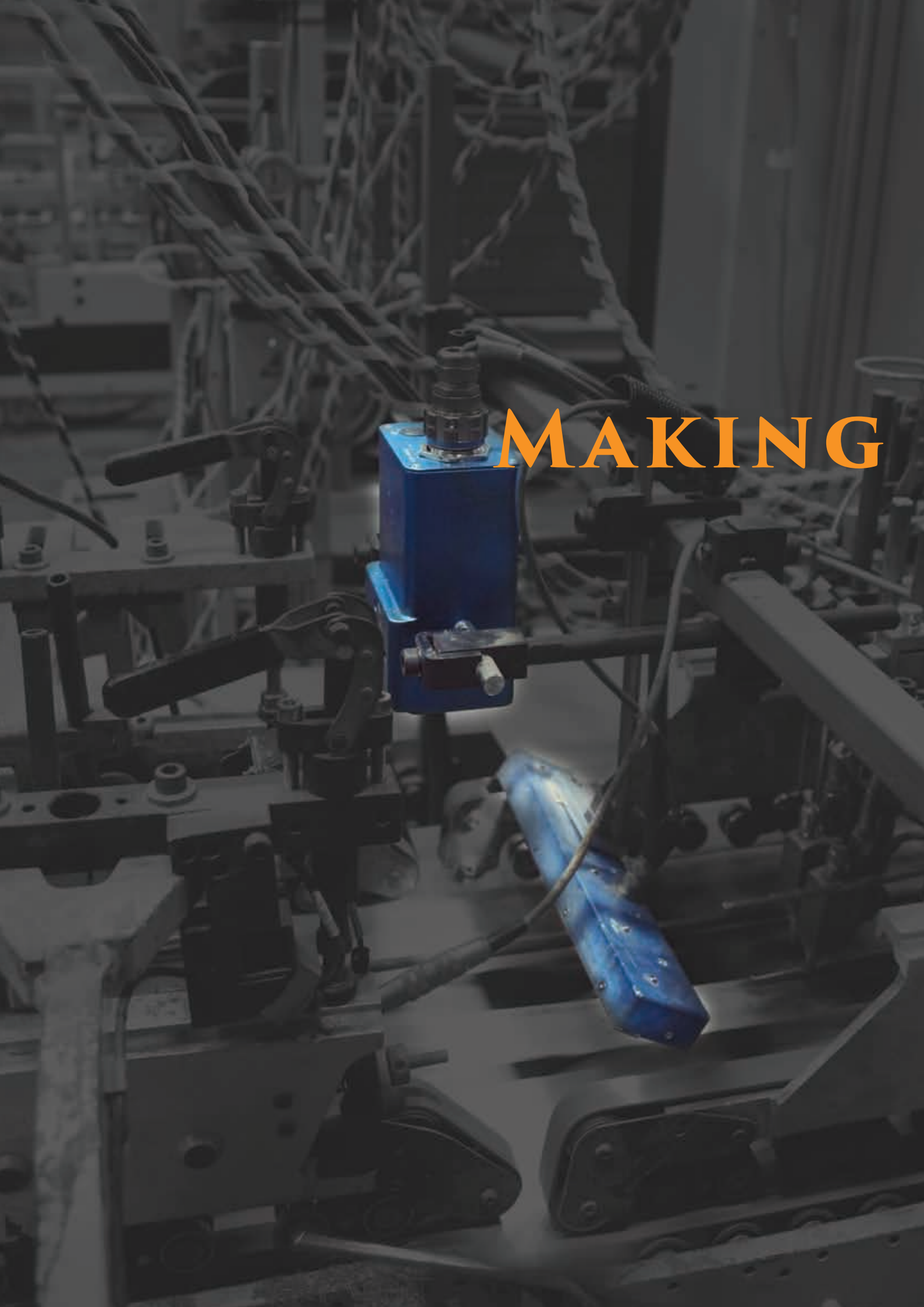




CLEARVISION

THE PERFECT CARTON™





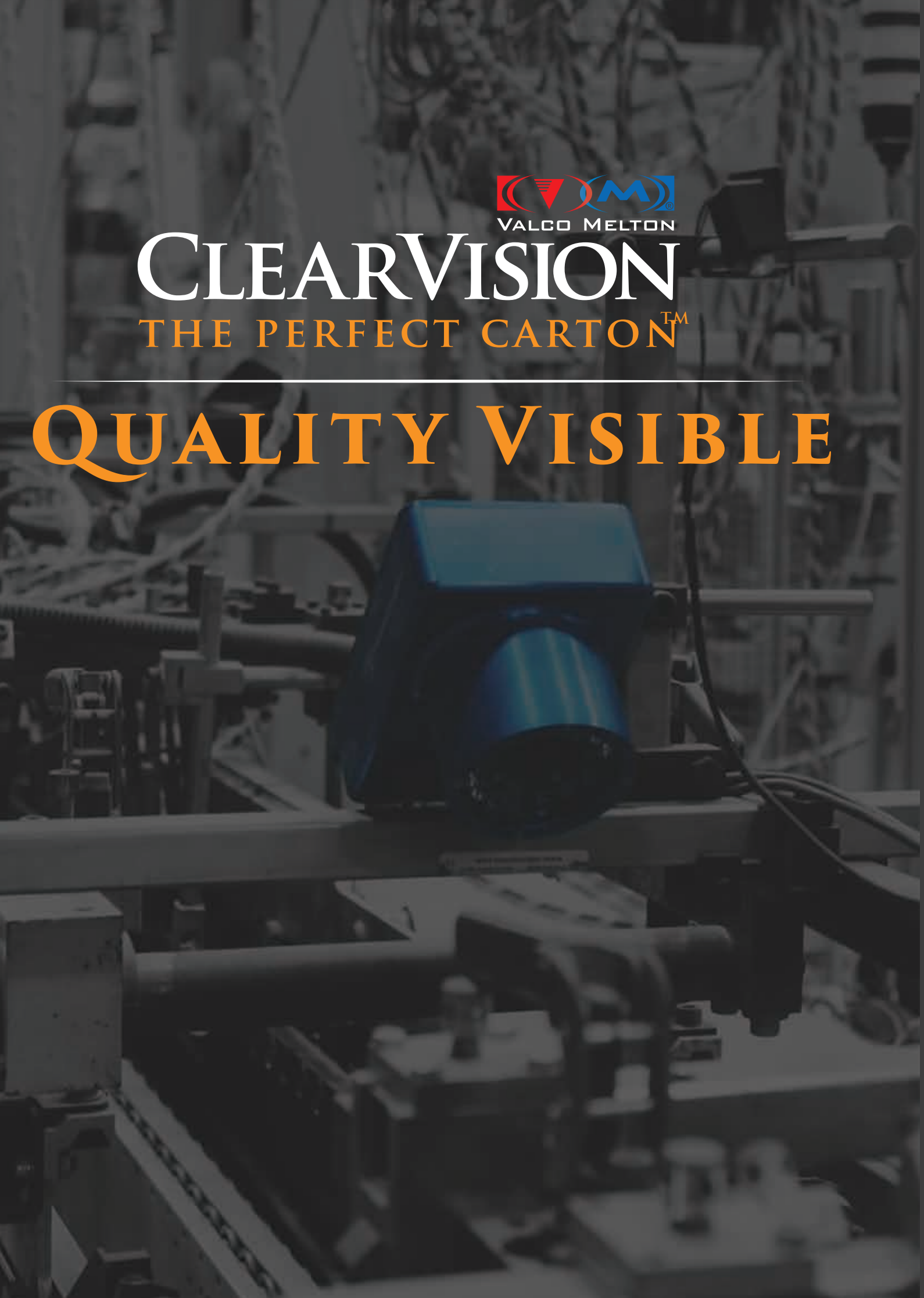
MAKING



CLEARVISION

THE PERFECT CARTON™

QUALITY VISIBLE



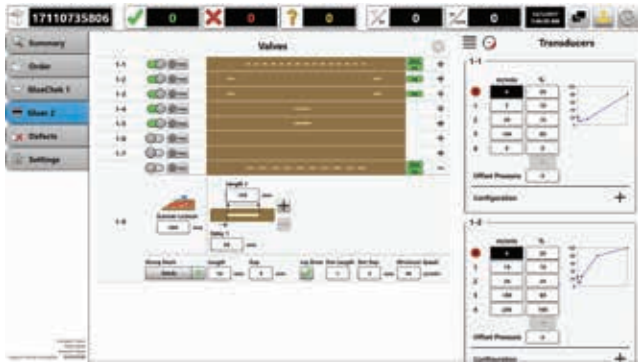


VALCO MELTON

CLEARVISION

THE PERFECT CARTON™

PATTERN CONTROLS



Glue Control

Setup and adjust all gluing-related attributes from the CartonChek control interface. Also use existing MCP and VCX platforms and link those directly into CartonChek.



VCX Controller



MCP-4J Controller



MCP-8 Controller

VALCO MELTON'S ECOSTITCH SOLUTION

The new MX EcoStitch solutions from Valco Melton out-performs traditional pneumatic hot melt valves in several ways:

- No shop air required
- Fewer consumable parts
- Reduced downtime
- Glue savings - **Better, precise glue patterns**



Valco Melton's EcoStitch Solution



Traditional Pneumatic System

Valco Melton offers a host of integrated and stand-alone hot melt solutions for your carton production.



D10 Melter



D4 Melter



CODECHEK

FEATURES

- Eliminate mixed copy issues
- Validate most 1D (Linear) and 2D (Matrix) barcodes
- Capture and record sequential and random barcodes including GS1 Datamatrix
- Speeds up to 65,000 cartons per hour
- Store variable data of serialized codes in database to ship with your order or future analysis



GLUECHEK

FEATURES

- Auto learn function
- Inspect all in-view areas including no glue zones
- Ensure glue is dispensed properly to the carton
- Checks:
 - Glue pattern
 - Glue volume
 - Extraneous glue splash or splatter
- Ensure folds and flaps are positioned correctly

LASERCHEK

FEATURES

- Laser line is projected onto carton and used to identify height changes.
- Height changes are inspected in order to recognize folds, flaps, and cut outs.
- Use LaserChek to check perforations, cut outs, tip-on (placement), die cuts or any point that requires a measurement or validation in-line.
- Real time reassurance that 4, 6, 12, and 24 pack carrier handles are punched or knocked out every time.
- Inspect fold presence and quality including double folds.



WINDOWCHEK

FEATURES

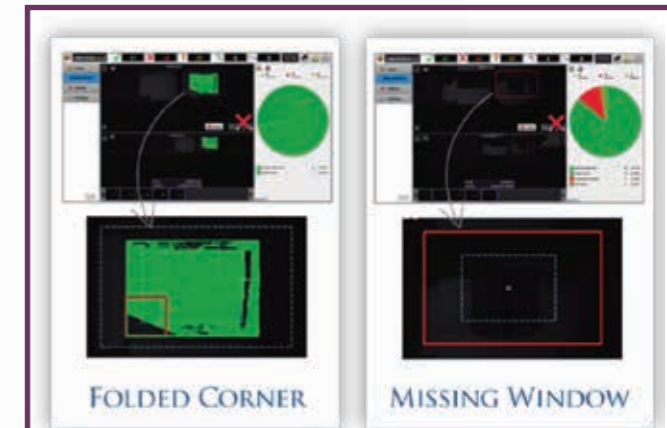
- Complete window inspection: height, width, position, contaminates, glue pattern & cello with slit are all measured or compared to Master Image
- Set and adjust multiple tolerances to detect various types of defects
- Eliminate potential hazards caused by improper packaging
- Increase customer satisfaction by consistently producing perfect windowed cartons
- Speeds up to 65,000 cartons per hour



BRAILLECHEK

FEATURES

- Decodes braille into text for accuracy and validation
- Identifies missing or misshapen braille dots
- Camera reads printed side of carton to inspect the side of the braille that is read
- Identifies braille dots that are insufficiently formed
- Up to 6 lines of braille on a carton panel
- Speeds up to 65,000 cartons per hour



CAMERAS FOR EVERY JOB



NARROW GLUECHEK

FEATURES

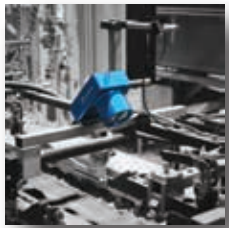
- Small footprint
- Simple to move and install
- Self calibrating
- Ideal for single glue line or DOT applications



MICRO CODECHEK

FEATURES

- Compact
- Built-in lighting
- Simple to move and install
- Ideal for barcode inspection



AREACHEK

FEATURES

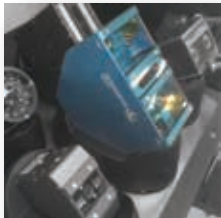
- Typically uses external lighting
- Best for permanent mount
- FOV: 40mm (1.57") to 100mm (3.94")
- Ideal for LaserChek



MEGA GLUECHEK

FEATURES

- Ideal for whole carton image
- Glue pattern, flaps, and fold confirmation
- Typically uses external lighting
- Best for permanent mount
- FOV: 60mm (2.36") to 700mm (27.56")



SHADOWCHEK

FEATURES

- Built-in lighting source
- Designed to create profile or shadow to define raised edges.
- Ideal for braille, glue patterns, tip-ons and more

SENSORS FOR EVERY JOB

AS-303 – Hot Melt and Cold Glue Single-Bead Detection

- Missing glue
- Incorrect placement
- Glue volume
- Glue dots in unglued areas
- No glue additives
- Scanner and sensor lockout for windows



CDS Color Code Reader

- Available as bottom-up reflex or pre-folder versions
- Mixed copy detection
- Print-to-print registration and print-to-cut registration detection
- Inspects R*G*B color density
- Inspection at speeds above 700 meters/min possible
- Live screen feedback

